



# JFS of Metrowest

## 2019 REPORT TO THE COMMUNITY

STAFF DRIVEN | VOLUNTEER POWERED | COMMUNITY INVESTED





*Lino Covarrubias, Chief Operations Officer; Rosemarie Coelho, Chief Learning, Performance and Strategy Officer; David Milowe, Board President; Marc Jacobs, Chief Executive Officer; Amanda Coughlin, Senior Director, Operations and Revenue Programs; and Lucia Panichella, Senior Director, Programs and Partnerships*

## Accelerating Social, Academic and Health Equity is at the forefront of all efforts and impacts.

That is what you should expect from JFS, and we are demonstrating it.

**Outcomes and impacts, with clear measures and strong data** are highlighted throughout this 2019 Annual Report to the Community. We have taken our commitments to you seriously.

You will see that:

**JFS** is instrumental in **significantly reducing poverty** in the Jewish community.

**JFS** is instrumental in inventing new and vibrant models for **harnessing the power of volunteers** to transform lives and community, particularly with immigrants and refugees.

**JFS** is instrumental in **enabling older adults to remain safe and independent** in the community.

**JFS**, through vibrant, collaborative community partnerships, is **advancing equity** and providing safety, hope and opportunity for immigrants and refugees, for first generation college students and for Veterans.

**Over 5,000 people served**, and many hundreds of volunteers participate with our talented staff in building a just community.

**Your** involvement and generosity make these **collective impacts** possible.

Once again, **Charity Navigator awarded JFS 4 Stars**, with an unsurpassed score of **100** (one of only 75 agencies to achieve this score out of over 9,000 rated by Charity Navigator!).

As we ready publication of this report, **JFS is right in the middle of a major leadership and organizational transition.**

**Marc Jacobs**, JFS CEO since 1996, is retiring in July 2020. After a very strong and thoughtful succession planning process and a comprehensive set of interviews, the JFS Board of Directors has named current JFS Chief Operations Officer, **Lino Covarrubias as Marc's successor.**

**Lino Covarrubias will assume the CEO role January 1, 2020.**

Marc will then move to a retiring CEO status, and work on a variety of leadership transition and special projects.

Concurrently, Lino and Marc have been examining and analyzing the JFS organizational structure and are making organizational design improvements in preparation for the new leadership.

Changes in executive management leadership roles are occurring.

That is why there is a group picture above! We are proud to announce that the Executive Management team will include Rosemarie Coelho (Chief of Learning, Performance and Strategy), Amanda Coughlin (Senior Director of Operations and Revenue Programs) and Lucia Panichella (Senior Director of Programs and Partnerships).

The JFS Board of Directors is energized; aligned and engaged with these leadership developments. Josef Volman will succeed David Milowe as Board President in spring 2020, and the future Board President and future CEO are already working on that crucial partnership.

**Your** continued involvement and generosity will be of great importance.

With Lino at the helm of the JFS ship, JFS will go from strength to strength, will continue to do better, never make excuses, and always move forward.

Sincerely,

Marc Jacobs

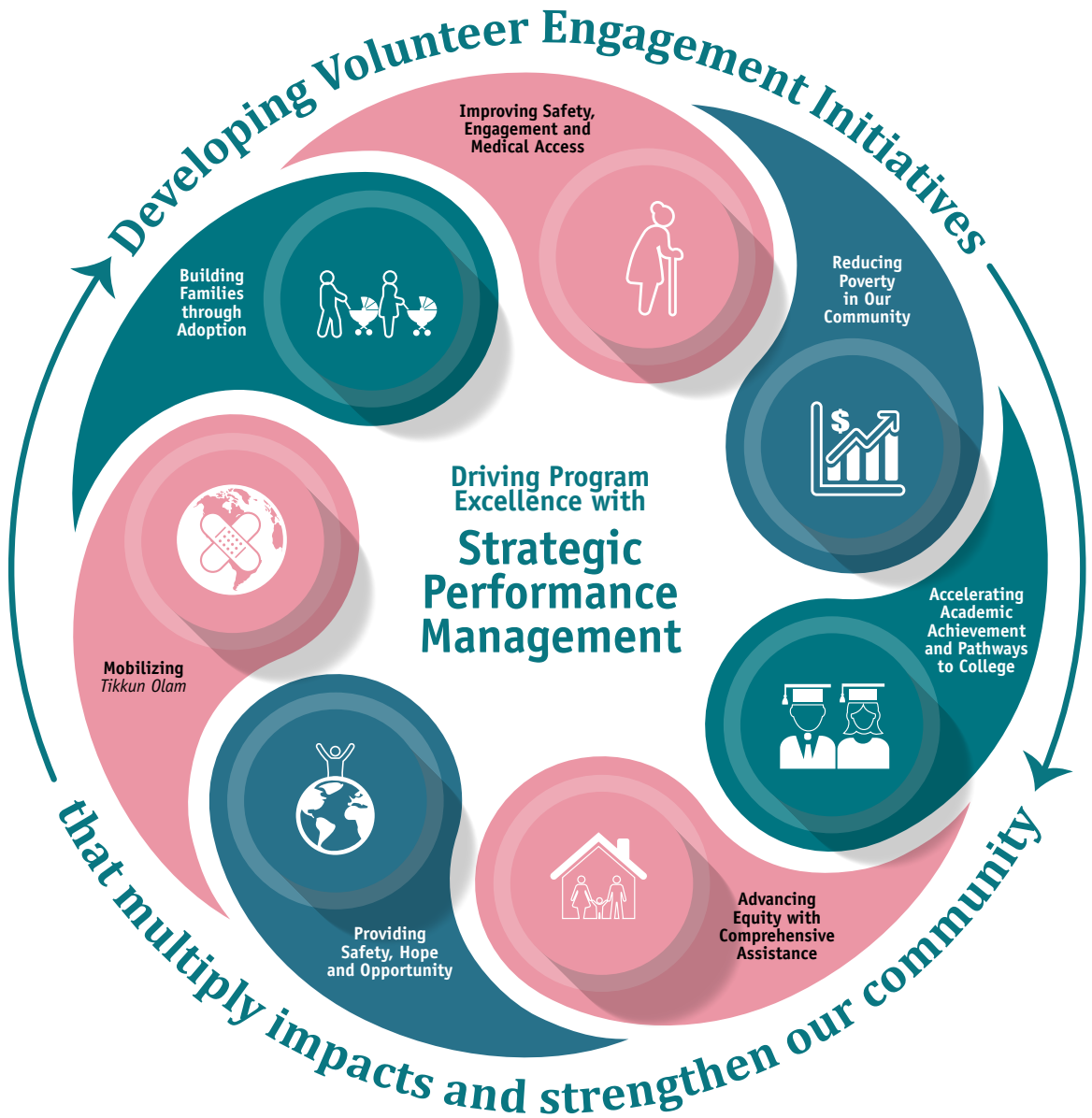
Chief Executive Officer

David Milowe

President



THROUGH THE POWER OF VOLUNTEERS,  
and with your **partnership** and **investment**, JFS is...



*"Through data collection and continuous outcome analysis, JFS strives to create and maintain responsive, high-quality programs with significant impact on the lives of the individuals, families, and communities we serve."*

**Rosemarie Coelho, Chief Learning, Performance and Strategy Officer**







Photo: Sheldon Golder

Helping families make ends meet, increasing frail older adults' access to health care and empowering volunteers to have meaningful impact are just some of the ways JFS is moving the needle in our community

# IMPACTFUL, INNOVATIVE PROGRAMS

## that Move the Needle across Multiple Domains

### Anti-Poverty Initiative

*provides the support struggling families need to move from crisis to stability*

JFS is reducing poverty significantly in the Jewish community. **Family Assistance** case managers address the immediate needs of families in crisis; then continue the work to move them to stability and self-sufficiency.

#### Programs Include:

Intensive Case Management, Emergency Financial Assistance, Lucy and Joe's Food Pantry, Holiday Assistance, Information and Referral, Ready for Success Employment Support

### Social, Educational and Supportive Programs

*that help frail older adults live better, longer*

JFS is improving safety, social engagement and access to medical care for frail older adults to maximize their health, independence and quality of life as they navigate the challenges that come with aging.

#### Programs Include:

Healthy Aging, Healthy Partners, Allies in Aging, Patient Navigator, LGBT+ Ally Navigator Initiative, Warm Connectors, Homecare, Memory Café, Keshet, Keshet Y.O.U., English as a Second Language (ESL)

### Academic Achievement and Pathways to College

*that gives immigrant and first generation students the support they need to succeed*

JFS is working to reduce inequities among low-income immigrants and first-generation college students through programs that bring learners, their families, educators and community partners together to address barriers to success.

#### Programs Include:

All Stars, Math/STEAM Academy, Parent University, Pathways to College

### Comprehensive Assistance

*that empowers immigrant families to succeed*

Today's immigrant families face many challenges, and JFS is developing innovative, integrated resources that address the social, emotional and financial needs of new Americans as they work to build stability and success for their families.

#### Programs Include:

Citizenship Assistance, Case Management, Healthy Harvest, Weekend Nutrition, ESL, Children's Clothing Closet, Information and Referral

### Safety, Hope and Opportunity

*for refugees victimized by world conflict*

JFS has a long history of resettling refugees and is currently working with Jewish immigrants from Eastern Ukraine as well as young families from Syria through the **Syrian Refugee Humanitarian Project**.

#### Programs Include:

Resettlement and Asylee Services, ESL, Employment Support, Financial Assistance, Case Management

### Mobilizing Social Justice Action

*that has meaningful impact in our community and beyond*

With values deeply rooted in *Tikkun Olam*, JFS is bringing resources and capacity to a variety of initiatives that empower Jews and community members of all ages to join in strengthening and repairing our world.

#### Programs Include:

Temple Partnerships, Jewish Emergency Management System, Bar/Bat Mitzvah and Day of Service Projects, Jewish Education Collaborative, Brothers for Life, JFS/Multifaith Alliance Mobilize Boston Container Project, Jewish Day School Projects

### Building Families

*with caring, professional adoption services*

**Adoption Choices** social workers are helping adoptive parents and birth mothers understand their options and navigate the adoption process.

#### Programs Include:

Home Studies, Educational Workshops, Counseling, Information and Referral, Post-Adoption Support



## ANTI-POVERTY INITIATIVE

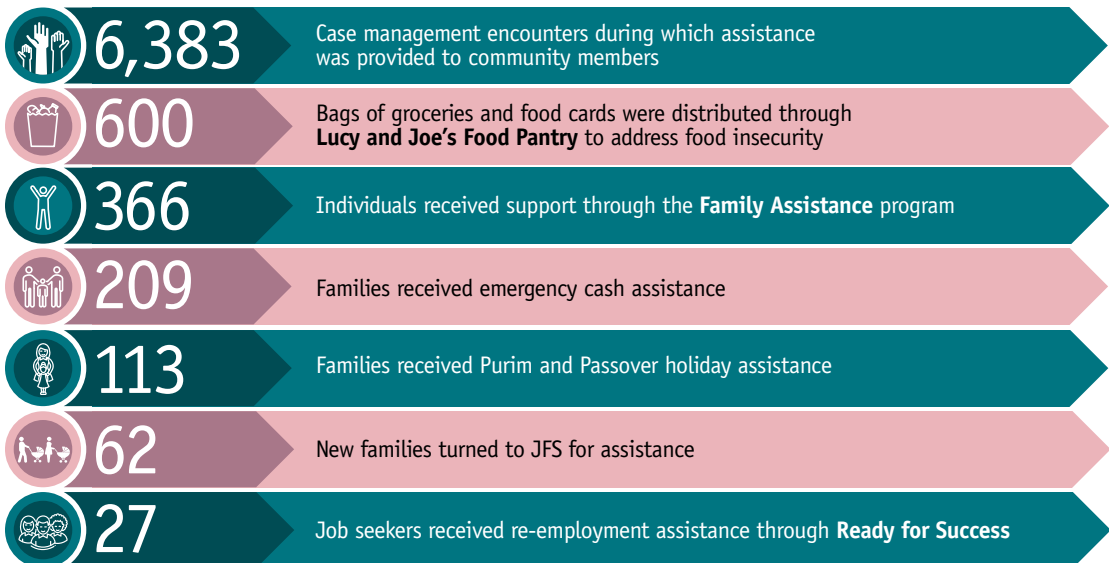
provides the support struggling families need to move from crisis to stability



*Lucy and Joe's Food Pantry provides emergency assistance to meet basic nutritional needs*

JFS' multifaceted approach is reducing poverty significantly in the Jewish community. In partnership with CJP, Jewish Vocational Service (JVS) and other local agencies, **Family Assistance** case managers provide long-term, comprehensive support—from information and referral to employment readiness and financial support—to address the immediate needs of families in crisis, then continue the work to move them to stability and self-sufficiency.

### It all adds up to:



## IMPACT!



## SOCIAL, EDUCATIONAL AND SUPPORTIVE PROGRAMS

that help frail older adults live better, longer



*Staff Nermin Helaly brings fun and exercise to NORC residents*



*Student Intern Patricia Murphy leads a workshop that improves dexterity and reduces social isolation*

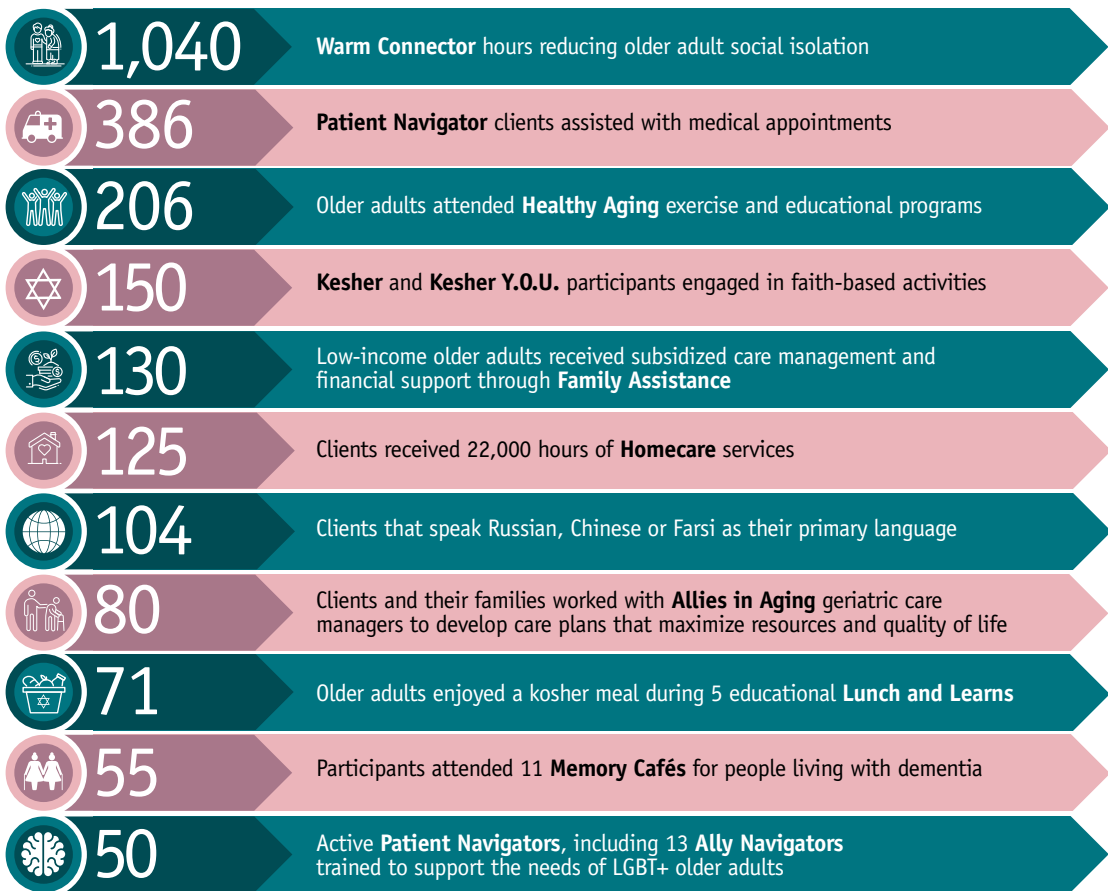
JFS is helping older adults maximize their independence and quality of life as they navigate the physical, emotional and financial challenges that come with aging.

Through a wide array of programs coordinated with local Naturally Occurring Retirement Communities (NORCs), synagogues and senior centers, JFS facilitators and volunteers encourage healthy living, increase access to medical care, reduce social isolation, address safety concerns and provide the support older adults need to live better, longer.





It all adds up to:



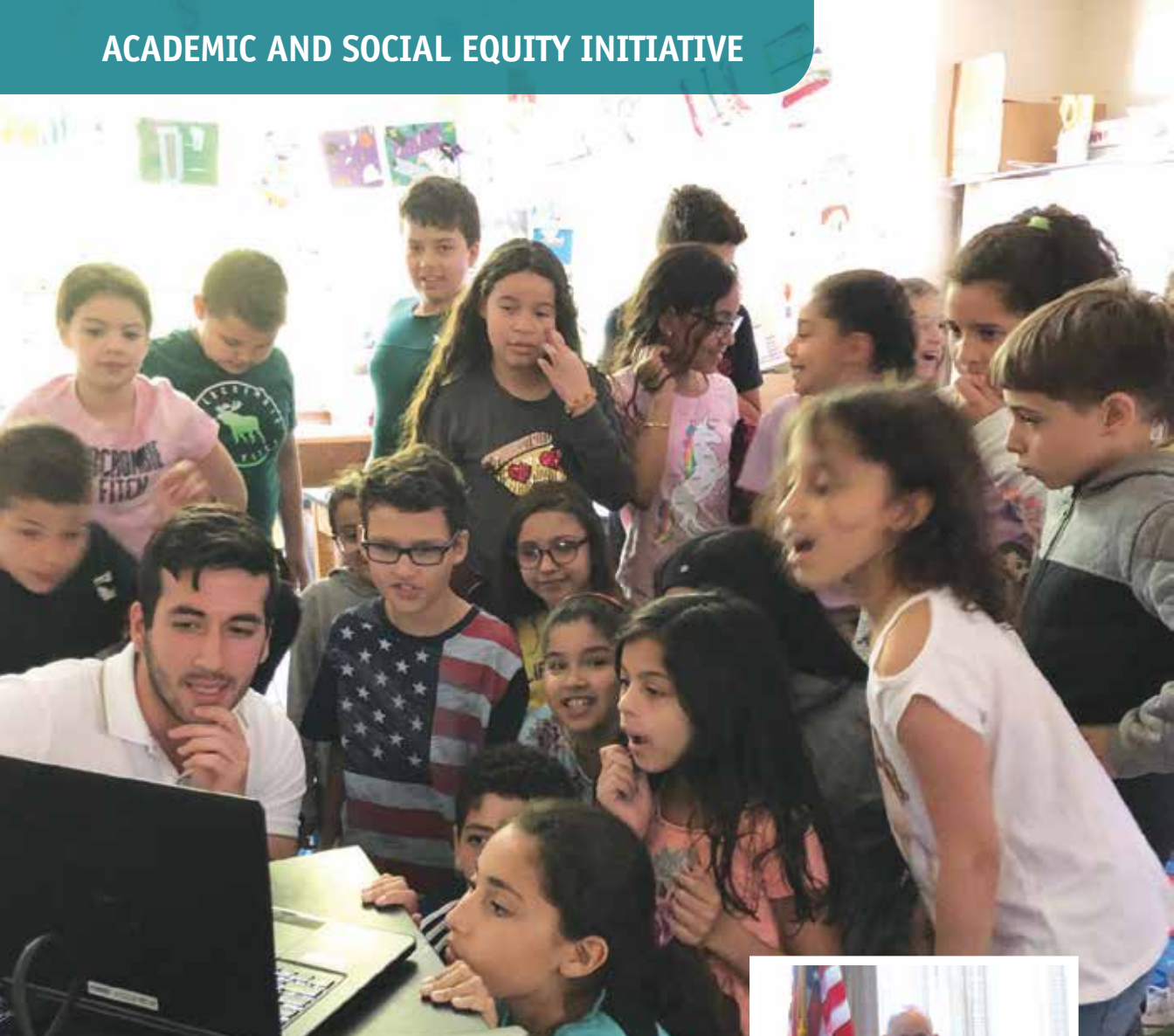
IMPACT!

.....

“Every day we receive calls about folks who are struggling with age-related issues. In their worry, they turn to JFS because they know our caring and experienced staff will respond with the information, services and support they need to ensure the safety and wellbeing of their loved ones.”

—Amanda Coughlin, Senior Director, Operations and Revenue Programs





*Students at the Woodrow Wilson Elementary School eagerly participate in an All Stars technology workshop*

Poverty, high family stress, language barriers and overburdened educational systems are some of the obstacles to success faced by many students in our community. To accelerate academic and social equity for those who face these barriers, JFS is working in collaboration with the Framingham School Department, Framingham State University and MassBay Community College to create innovative, wrap-around programs that address academic, social and basic needs challenges.



*President of MassBay Community College and Board Member David Podell speaks of the challenges faced by many students, ranging from the burden of supporting a family to homelessness*





At the elementary school level, **Pathways to Academic Growth, Empowerment and Success (PAGES)** (formerly **Reducing Achievement Gaps**) works with young learners and their families to reinforce lessons taught during the school day and build social and emotional skills that will promote academic success.

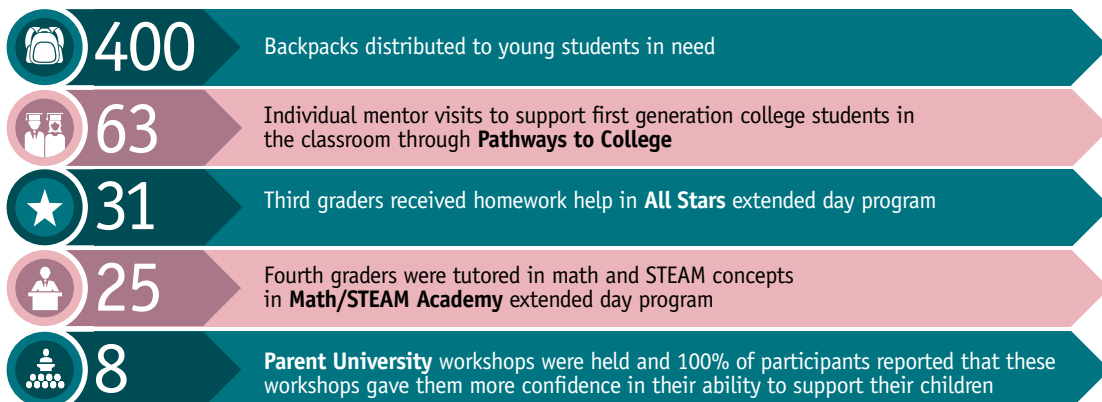
For adult students, **Pathways to College Success** starts with mentorship and support in the classroom then facilitates access to professional opportunities in the community.

From working with families, to supporting the goals of educators, to fueling initiatives with the skills of volunteers, JFS is building frameworks that empower student success.



*Young volunteers provide students with the resources they need to succeed*

## It all adds up to:



## IMPACT!



# COMPREHENSIVE ASSISTANCE

that empowers immigrant families to succeed



Photo: Sheldon Golder

*Clients celebrating their new status as United States citizens*



*The Children's Clothing Closet ensures young students have warm clothing for winter*

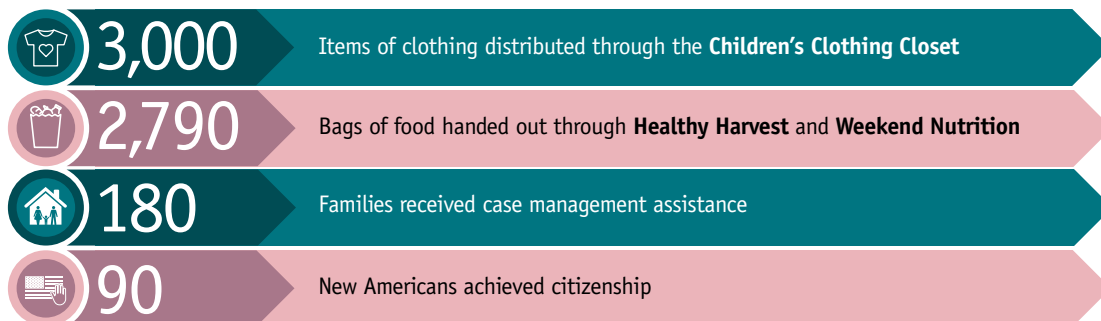
JFS is developing innovative, integrated resources that address the social, emotional and financial needs of immigrants and their families. Intensive case management, supplemental nutritional assistance through **Healthy Harvest** and **Weekend Nutrition**, seasonal clothing from the **Children's Clothing Closet** and citizenship programs

support families as they build their lives in this country and actively engage in their community.



*Americorps member Amanda Boralessa helps Russian-speaking older adults learn English as a Second Language (ESL)*

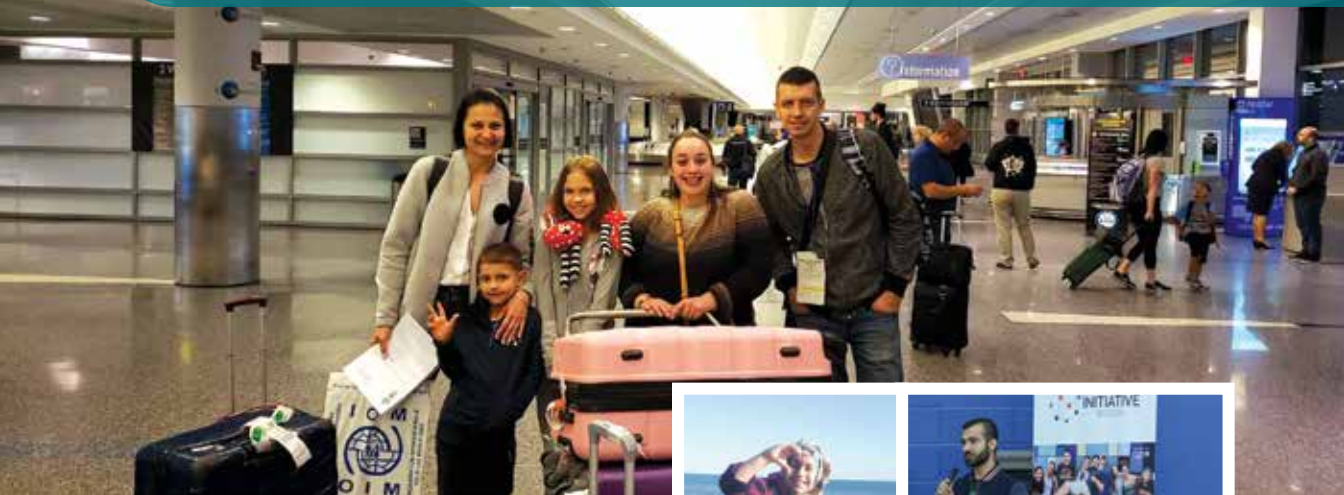
## It all adds up to:



## IMPACT!



**SAFETY, HOPE AND OPPORTUNITY**  
for refugees victimized by world conflict



*Staff Margaret Kenney welcomes a Jewish refugee family fleeing anti-Semitism and oppression in Eastern Ukraine*

Despite a narrowing of channels through which refugees, asylees and their families can safely seek sanctuary in the United States, JFS is continuing to work with new arrivals from around the world.



*After fleeing violence in their war-torn country, these new Americans (resettled through the Syrian Refugee Humanitarian Project) are working, going to school and building a future in our community*

In partnership with HIAS, ORI and JFS of Western Mass, JFS helps new Americans achieve self-sufficiency and adjust to life in their new country through comprehensive support that includes case management, benefits assistance, English as a Second Language, employment support and financial assistance.

When individuals and families flee violence and instability and bring their hopes for a better future to this country, JFS is here — proudly supporting immigrants in our community and standing up for those left behind.

JFS has worked with immigrants and families from over 60 countries worldwide, including:				
Albania	Argentina	Azerbaijan	Bolivia	Brazil
British Virgin Islands	Cameroon	Chile	China	Dominican Rep
Egypt	El Salvador	Ghana	Guatemala	Haiti
India	Iran	Israel	Kazakhstan	Kyrgyzstan
Mexico	Nigeria	Pakistan	Peru	Portugal
Rep of Congo	Rep of Moldova	Russia	Sierra Leone	Syria
Tajikistan	Ukraine	Venezuela	Vietnam	Zambia





## MOBILIZING SOCIAL JUSTICE ACTION

that has meaningful impact in our community and beyond



**BROTHERS FOR LIFE** אחים לחיים

*Former CJP Board President Neil Wallace, CEO Marc Jacobs join the Kraft family, US Wounded Warriors and Brothers For Life (Israeli Wounded Warriors) at the annual Gillette Stadium event COO Lino Covarrubias helps coordinate*

In addition to the many programs highlighted herein, JFS is bringing resources and capacity to a variety of initiatives that offer opportunities for community members of all ages to engage in *Tikkun Olam*, including:

- Brothers for Life – honoring veterans who have sacrificed in service to their country
- JFS/Multifaith Alliance Mobilize Boston Container Project – sending desperately needed supplies to refugee camps in war-torn Syria
- CJP Humanitarian Missions – working with partners to broaden impacts and strengthen the call for social justice
- Jewish Emergency Management System – providing security and emergency response coordination and expertise
- Jewish Education Collaborative – facilitating conversations that build bridges to inclusion and understanding



*For her Mitzvah project, a young volunteer leads a packing event for the JFS/Multifaith Alliance Mobilize Boston Container Project*

Photo: Craig Byer/CJP



*Senior Director Lucia Panichella joins CJP's Women in Philanthropy Mission to San Diego to bear witness to the humanitarian crisis at the border and support those who are working with incoming families*

- Temple Partnerships – engaging in collaborative programming, advocacy and community member support
- Bar/Bat Mitzvah and Day of Service Projects – empowering volunteers to help those in need
- Jewish Day School Projects– teaching lessons in service, compassion and gratitude





*Students at The Rashi School help JFS send school supplies to youngsters living in refugee camps in Syria*

In addition to the array of partners highlighted throughout this report, JFS is proud to acknowledge collaborative relationships with over 100 organizations – from public to private, secular to faith-based, local to international – strategic and powerful partnerships that drive collective impact across multiple domains.

2Life Communities/Shillman House	Bridgewater State University	Congregation Or Atid, Wayland
Adidas/Reebok	Brookdale Cushing Park	Creative Development Co. LLC/ Saxonville Mills
Alzheimer’s Association	Brophy Elementary School	Cummings Foundation
American Jewish Committee-New England	Brothers for Life	Dana Hall School
Arab American Benevolent Association	Callahan Senior Center	Daniel’s Table/Foodie’s Café
Babson College	Carlyle House	Delivering Good
Baypath Elder Services	Chestnut Dental Associates	DUET/Southern New Hampshire University
Beacon Communities/Edmands House	CJP Women’s Philanthropy Group	Edwards Church, Framingham
Bob’s Discount Furniture	Combined Jewish Philanthropies (CJP)	Fenway Health LGBT Aging Project
Books for Refugees	CommCreative	First Parish, Lincoln
Boston College	Congregation B’nai Shalom, Westborough	Foundation for MetroWest
Boston University	Congregation Beth El, Sudbury	Framingham Adult ESL Plus
Boston’s Jewish Community Day School	Congregation Kehillath Israel	Framingham Council on Aging
Brazilian American Center: BRACE	Congregation Mishkan Tefila, Brookline	



# COLLABORATIVE COMMUNITY PARTNERSHIPS continued



*Superintendent of Schools Robert Tremblay, Mayor Yvonne Spicer and Jewish Teen Initiative Peer Leadership Fellows like Fiana Herscovici work with JFS to build and strengthen community*

Framingham Department of Health

Framingham Flyers Hockey Team

Framingham Housing Authority

Framingham Public Library

Framingham Public Schools

Framingham State University

Golden Pond Assisted Living

Greater Boston Chinese Golden Age Center

Heritage at Framingham

HIAS

Holiday Dreams Foundation

Horizon Technology

Islamic Center of Boston

Islamic Society of Framingham

JCC Greater Boston

Jeff Goldman Immigration Law

Jewish Big Brother Big Sister

Jewish Collaborative Services of RI

Jewish Community Relations Council

Jewish Family & Children's Service

Jewish Teen Initiative

Jewish Vocational Service of Boston

Jewish War Veterans

JFS of Western Massachusetts

Karam Foundation

Keshet

Latino Health Insurance Program

Lovin' Spoonfuls

Mark's Movers

Mary Ann Morse Healthcare Center

MassBay Community College

Massachusetts Immigrant and Refugee Advocacy Coalition

Massachusetts Office for Refugees and Immigrants

Massachusetts Office of Refugee Resettlement (ORI)

MetroWest Chamber of Commerce

Metrowest Health Foundation

MetroWest Jewish Day School

Metrowest Medical Center

Metrowest YMCA

Multifaith Alliance

OUTMetrowest

Prudential

The Rashi School

The Residence at Valley Farm

Salem State University

Sanofi Genzyme Corporation

Shapiro Foundation

Solomon Schechter Day School

Sudbury Council on Aging

Sudbury Foundation

Syrian American Medical Association

Temple Beth Am, Framingham

Temple Beth Elohim, Wellesley

Temple Beth Shalom, Needham

Temple Beth Sholom, Framingham

Temple Beth Torah, Holliston

Temple Emanuel, Newton

Temple Israel, Boston

Temple Israel, Natick

Temple Shalom, Newton

Temple Shir Tikva, Wayland

Temple Sinai, Brookline

TJX Companies

Tufts Hillel at Tufts University

Wellesley Dental Group

Whitney Place at Natick



*COO and U.S. Navy veteran Lino Covarrubias—honored by MassBay Community College for his deep commitment to helping veterans achieve their goals—poses with the USS Constitution Color Guard*

Oak Knoll Healthcare Center

On Process Technology

Open Spirit

Orchard Hill Sudbury

Whole Foods

William James College

Woodrow Wilson Elementary School

Yad Chessed





## VOLUNTEER ENGAGEMENT INITIATIVES

that impact and strengthen our community



*Volunteers fill backpacks with school supplies for young, underserved students in Framingham*

JFS is harnessing the power of over **300 volunteers** to make a significant impact in our community. Across **17 programs**, volunteers have donated over **5,000 hours** addressing the needs of clients, including providing backpacks with school supplies to underserved students, distributing clothes to low-income families, guiding immigrants through the citizenship process, resettling refugee parents and children, escorting frail older adults to medical appointments and building relationships to reduce social isolation.

**Thank you to our many volunteers for partnering with  
JFS to Stand Up for Those Left Behind!**



*Volunteers from CJP Women's Philanthropy Group (Leslie Pucker, Michelle Barmazel, Maggie Rubin, Michelle Bearak, Julia Hamilton, Karly Hamilton, Jordana Alford, Diane Dalsimer, Ellen Berkowitz, Jude Sydney, Michelle Paster, Laurie Gliklich and Robin Friedman) organize donations at the Children's Clothing Closet*





*JFS Patient Navigator volunteers with staff Merrill Adler, Karen Block, Lesley Orlinsky and Senior Director Amanda Coughlin celebrate receipt of a Cummings Foundation 10 Year Sustaining Grant during the annual team barbecue*

Marianna Abdalla	Axie Breen	Maria Dawson	Barbara Gainsboro
Jill Abend	Nancy Broner	Magda Desouza	Diane Gardener
Janis Abramovitz	Kenneth Brown	Blanche Dietz	Michael Gardener
Margery Adams	Sheila Buckley	Victor Dietz	Ute Geigenmuller-Gnirke
Helen Alcala	Fahad Bunjo	Alexis Digasso	Laura Gilman
Kim Aliprantis	Risa Burgess	Nancy Dlott	Michael Gilman
Maryam Aljasem	Alan Byer	Vitoria Do Carmo	Paula Glickman
Kate Appiah	Doris Cachecho	Anna doRosario	Doreen Goldberg
Michael Avitzur	Riad Cachecho	Susan Driscoll	Marilyn Goldberg
Louise Backaler	Denise Castelline	Stephanie Elkind	Sheldon Golder
Richard Baritz	Emily Chalfin	Jainah Etheart	Margie Goldin
Cecilia Barrero	Renata Chaves	Roberta Falke	Sarah Gotbetter
Ivy Bauer	Beth Chesler	Mikayla Fier	Martin Greenstein
Mark Bauer	Karyn Clarke	Benjamin Fink	Emma Gun
Lee Beavers	Marilyn Clausen	Hannah Finn	Abby Hechtman
Noreen Begley	Karen Cohen	Sofi Finn	Carol Hengerle
Katalin Belausteguioitia	Ronna Cohen	Carolyn Flammey	Gabriela Herscovici
Karin Beth	Rosalyn Cohen	Joanna Fleisher	Charles Homer
Daniele Bick	Jackie Cornelison	Dania Flores Lopez	Jacqui Horwitz
Donald Bloch	John Cox	Gary Forman	Dave Jack
Ellen Bloch	Michelle Cuata	Rosalie Fox	Theresa Jo
Jordana Boloker	Andrea Cunningham	Gustav Freedman	Jane Joiner
Susan Brady	Ann Daitch	Genesis Funes	Stephanie Juma







*Volunteers Ed Barry and athletes from the Framingham Flyers Ice Hockey Team distribute Thanksgiving dinner to low-income families at the Woodrow Wilson Elementary School (Photos: Axie Breen)*

Robert Katz	Fariba Meriaux	Bonnie Rosenberg	Andrea Sussman
Michael Kenyon	Noemi Meriaux	Kerrie Rothschild	Maressa Tang
Qwynn Kobertz	Jacqueline Milowe	Anne Rubenstein	Lucy Tannen
Leah Kogan	Farouk Mutaawe	Linda Sakin	Cecilia Teixeira
Maria Kotzia	Anne Nakhla	Jackie Sand	Daisha Toomer
Kim Lander	Faimah Nalwanga	Michael Sawyer	Abigail vanLuling
Jessica Lasser	Katherine Neary	Susan Schaufeld	Brianny Vasquez
Paula Lavidor	Deborah Needleman	Rachel Seliber	Isabella Ventura
Martha Lerman	Lauren Nemeth	Stefani Sepinuck	Kevin Ventura
Julius Levin	Robin Nichols	Shaan Shaikh	Concetta Vitale
Jeffrey Levine	Nayara Nobrega	Norma Shamah	Miguelina Vivieca
Linda Levitt	Leah Orlinsky	Barbara Shapiro	Keith Wagner
Sara Levy	Gordon Owades	June Shea	Diana Wainrib
Laura Lilly	Roxanne Pappenheimer	Bertha Shear	Linda Weene
Janet Lipkin	Dharti Patel	Jack Shear	Geri Weinstein
Deborah Litvin	Sam Posner	Howard Sholkin	Lisa Weinstock
Judith Locke	Alison Qiu	Amy Siegel	Rachel Welt
Angela Macedo	Tyler Quade	Beatriz Silva	Barbara Wetzstein
Ery Magasanik	Andrea Ramirez	Juliana Singer	Jill Winitzer
Mukesh Mahimtura	Noel Raphael	Leslie Singer	Roberta Winitzer
Karen Margolis	Nanda Ray	Jordan Sisitsky	Debra Wojnarowski
Mia Markley	Nandini Ray	R Jonah Sisitsky	Julie Wolf
Elaine Marmer	Shivani Ray	Susan Sloane Sherman	Rachel Wolf-Wagner
Joshua Martin	Gabriella Ribeiro	Peter Smith	Leslie Wortzman
Alanna Martins	Neil Rich	Elizabeth Sobol	Huijia Yang
Melvyn May	Julia Rivera	Susan Stock	Roberta Zallen
Michelle Mayer	Ariyanna Roach	Karen Stoler	Zeina Zayour
Noura Megala	Barbara Robinson	Mel Stoler	Naomi Zwelling







Skylar Volman with Honorees Josef and Dana Volman



Staff Anna Michelson presents the JFS Max Michelson Humanitarian Award to Sarah Sheehy, Director of Strategic Sourcing and Chair of the GiveInspired Committee at Kronos Incorporated

JFS proudly honors Dana and Josef Volman and the GiveInspired team at Kronos Incorporated, extraordinary community partners whose powerful efforts are impacting the lives of children and families throughout Metrowest, Greater Boston and communities around the world.

## SPECIAL FRIENDS HOST COMMITTEE

Gary and Cara Dennis

Tripp and Robin Jones

David and Ellen Rosenblatt

Ian and Maggie Rubin

Frank and Karen Segall

Matthew and Rachel Singerman

Dylan Volman

Skylar Volman

Michael Zeldes

## SPECIAL THANKS TO...

Jodi Blankstein, Cantorial Soloist and Adam Dehner, Guitarist

Jim and Donnamarie Floyd, Thelma World Productions

David Fox Photography

Mark Globerson, DOWSHU

Joanne Johansen, Kronos

Mark Julien, Kronos

Bruce Nable, SER Exposition

Sarah Sheehy, Kronos

## FOOD PROVIDED COURTESY OF...

110 Grill

2Life Communities  
(Formerly JCHE)

Cakes by J and J

Foodie Café Catering

Larry Levine's Kosher Market/  
Catering by Tevya

Legal Sea Foods

The Melting Pot

New City Microcreamery

Rail Trail Flatbread Co.

Red Heat Tavern

Roche Bros. Catering

The Sleepy Baker

Take the Cake

Temazcal Tequila Cantina Framingham

Uno Pizzeria and Grill

Yummy Mummy Brownies

Zaftigs Delicatessen

Zayde's Market



## LEGACY GIFTS

ensure JFS' impact in the community for future generations



*JFS creates opportunities for the next generation to help Stand Up for Those Left Behind*

As we look forward, legacy giving will play a significant role in assuring that we can maintain the level of services needed to positively impact our Metrowest community.

A legacy gift to JFS can ensure that the agency has the resources it needs to:

- Meet future needs
- Maintain consistent program funding
- Expand financial resources
- Respond in the event of an emergency

### Priority Program Areas for Endowment and Legacy Funding:



Civic Engagement, Community Service and Leadership



Education, Mentoring for Low-Income Children and Families



Hunger, Basic Needs, Family Assistance and Employment



Healthy Aging in the Community for Frail, Vulnerable Older Adults, Support for Family Caregivers



“ We have designated a legacy gift to JFS of Metrowest because we are committed to ensuring that the work of the agency continues for generations to come. ”

—Chester and Diane Black



# DONORS & CONTRIBUTORS



*CJP President Rabbi Marc Baker, CEO Marc Jacobs, Aron Ain and Shira Goodman*

## \$500,000+

Combined Jewish Philanthropies  
(includes core capacity and all  
programmatic grants)

.....

## \$50,000-199,999

Chester and Diane Black  
Susan Copeland  
Herb and Maxine Jacobs Foundation  
The Shapiro Foundation

.....

## \$25,000-49,999

Aron and Susan Ain  
Robert and Cari Band  
Edward and Peggy Barry  
Nancy Kaplan Belsky and Mark Belsky  
Joan H. Brack Charitable Foundation  
CommCreative, Ashley DePaolo  
Cummings Foundation, Inc.  
Foundation for Metrowest,  
The Poitras Fund  
Edward and Barbara Scolnick  
Temple Beth Elohim\*

## \$15,000-24,999

Harvey and Marsha Chasen  
Foundation for Metrowest  
Middlesex Savings Charitable Foundation  
Ellis and Barbara Morris  
Sanofi Genzyme Corporation  
TUFTS Health Plan Foundation

.....

## \$5,000-14,999

Mark and Carolyn Ain  
Anchor Line Partners  
Ken and Jodi Bring  
Burns & Levinson LLP  
J.Calnan & Associates  
Chase Carpenter  
Allan and Rebecca Chasen  
Suzanne Collins  
Congregation Beth El  
Creative Development Co. LLC  
Cushman & Wakefield, John Boyle  
Peter and Hinda Drotch  
Ernst & Young  
Daniel and Dana Finn  
Steven and Renée Finn

David and Tracey Frankel  
Ari Freisinger and Elizabeth Mishkin  
Jay and Barbara Gainsboro  
Judith Gleysteen  
Lawrence and Beth Greenberg  
Wyc Grousbeck and Emilia Fazzalari  
Richard and Gabrielle Henken  
John and Amy Herrera  
Hewlett Packard Enterprise  
Integration Partners  
Jabil  
Brad and Allison Kates  
Louis and Rosanne Kates  
Jeffrey Kraines and Linda Kaplan  
Kronos Incorporated  
Richard and Clare Lesser  
Ezra Levine and Gretchen Warland  
Melanie Marcus and Chris Leonard  
Marsh & McLennan Companies, Inc.  
David and Gail Milowe  
Charles and Jessica Myers  
Network For Good  
Gregory Pappas  
Steven and Lisa Pite  
Paul and Marcia Rosenberg

\* This institution raised money from their membership to support the Syrian Refugee Humanitarian Project.



Frank and Karen Segall  
 Abraham Shapiro Charity Fund  
 Jeremy Spector and Robin Halsband  
 Michael and Karen Tichnor  
 TJX Foundation  
 Josef and Dana Volman  
 Neil and Lisa Wallack  
 Jed and Ilana Weiss  
 Worldcom Exchange, Inc./WEI  
 Y & R Charitable Trust, Lisa Y. Rourke

## \$1,000-4,999

Jeff and Abby Ackerman  
 Reuben and Christine Ackerman  
 Neil Aresty and Estie Rappaport  
 At Your Service Homecare  
 Jamie and Thea Bader  
 Maria and Joseph Barry  
 Steven and Michelle Bearak  
 Lawrence Begley  
 Alan and Judy Bernstein  
 Ronald and Daniele Bick  
 Darren and Michelle Black  
 Jonathan and Jess Black  
 Donald and Ellen Bloch  
 Bob's Discount Furniture  
 Charitable Foundation  
 Boston Breast Diagnostic Center,  
 Elsie Levin  
 John and Mary Boyle  
 Robert and Janet Brack  
 Bonnie Buckner  
 John and Robin Butler  
 Jerry Carle  
 F. Javier Cevallos and  
 Josée Vachon-Cevallos  
 Conrad and Lisa Chanzit  
 Carl and Carol Chudnofsky  
 Scott and Ronna Cohen  
 Lisa Cukier  
 Daffys Foundation  
 Ellen and Bruce Davidson



*Edward Shapiro, Marjean Perhot and Senior Director Lucia Panichella*

Jeremy and Sherrie Delinsky  
 Gary and Cara Dennis  
 Dun & Bradstreet, Inc.  
 Stephanie Elkind and Jay Freedman  
 Enterprise Holdings  
 David and Lauren Fishman  
 Jennifer and Anthony Fortunato  
 Foundation for Metrowest,  
 Atkinson Family Fund  
 Melvin and Beatrice Fraiman  
 Framingham Union Aid Association  
 Joseph L. & Ray L. Freund Foundation  
 Michael and Linda Frieze  
 Mimi George and Charles Irving  
 Jonathan and Leslie Gerber  
 David Gewolb  
 Christopher and Mary Ellen Girgenti  
 Mark Globerson and Esther Heimberg  
 Robert and Susan Glovsky  
 Joseph and Lynne Goodman  
 Steven Goodwin and Sudie Schenck  
 James Gordon  
 Deborah and Wyatt Gotbetter  
 Steven Grinspoon and Winnie Sandler  
 Louis and Patti Grossman  
 Wolf and Berna Haberman

Allyson Halpern  
 Earle and Carol Halsband  
 Tammy Harris  
 Harvard Bioscience, Jeff Duchemin  
 HUB International New England,  
 Charles Brophy  
 HUB International Northeast  
 Donald and Marcey Hunter  
 Dallas Imbimbo  
 Marc and Joanne Jacobs  
 JMH Capital Partners, LLC  
 Jack and Audrey Kadis  
 Mark H. and Mary Ann Kaplan  
 Nicholas Kovacevich  
 Mitchell and Ann Kramer  
 George and Lizbeth Krupp  
 David and Mandi Kunen  
 Emily and Brett L'Esperance  
 Andy and Nan Langowitz  
 Lisa Leavitt and Steve Jermanok  
 Joel Lehrer and Robyn Paret  
 LR Construction, Louis Laskey  
 Ery and Laura Magasanik  
 Richard and Candace Mandel  
 Warren Manning and Susan Rodgin  
 Joan and Joseph Maraia  
 William and Cynthia Marcus



# DONORS & CONTRIBUTORS continued

Burton and Elaine Marmer  
 Andy and Gail Merken  
 Harry and Deborah Merkin  
 Mightycause  
 David Miller and Ruth Hertzman-Miller  
 Mintz & Gold LLP  
 Adam Ochlis and Eve Tapper  
 Peter Olsberg  
 Perkins Eastman & Packard Design  
 The Press Family Foundation  
 Prestige Services Inc.  
 Quilling Card LLC  
 Judi Raphael  
 Sari Anne Rapkin  
 Insight Private Wealth of RBC  
 RBC Wealth Management and  
 RBC Foundation-USA  
 Alan and Cathy Regensburger  
 David and Ellen Rosenblatt  
 Michael Ross and Sherri Jurgens  
 Neil and Tracy Ross  
 Kevin and Tracy Routhier  
 Michael Savit and Jill Cohen  
 Lester and Caren Schindel  
 Ron and Evelyn Schneider  
 Andrew and Barbara Schultz  
 Marcia Schwartz  
 Jay and Andrea Segel  
 Edward and Barbara Shapiro

SHI International Corp.  
 Cynthia Shulman  
 Richard and Martha Shults  
 Alan and Leslie Singer  
 David and Mi Chong Singer  
 Matthew and Rachel Singerman  
 Jill Smith and Randy Ross  
 Robert and Myra Snyder  
 Michael and Arlene Sobol  
 Bill Squadron  
 Stanetsky Memorial Chapel and  
 Levine Chapel, Inc.  
 State Street Co.  
 The Sudbury Foundation  
 Jeffrey and Heather Swartz  
 George and Allison Tobia  
 Herb and Suzy Tobin  
 Andrew Troop and Andrea Sussman  
 Jeffrey Unger  
 United HealthCare  
 Zach Wainwright and  
 Marissa Mamon Wainwright  
 Watermill Group  
 Barry Weiss and Laurie Alpert  
 Adam and Michelle Wilen  
 David and Malka Young  
 David Young and Michelle Mayer  
 Arnold and Brenda Zaltas  
 Michael Zeldes

## \$250-999

Peter and Jill Abend  
 Mark and Deborah Abrahams  
 Jacqueline and Justin Adelson  
 Aetna Foundation  
 Lisa, Patrick and Lorelei Ahn  
 Helen Alcalá  
 Jeff Alexander and Jocelyn Bailin  
 Robert Allen and Shirley Hui  
 American Airlines  
 Applied Materials Foundation  
 Jeffrey Baker and Emily Silver  
 Marc and Carol Bard  
 David and Nancy Bayer  
 Lee Ann Beavers  
 Andrew and Deborah Becker  
 Laura and Scott Beebe  
 Sokol Belishova  
 Ron and Leslie Bello  
 The Benevity Community Impact Fund  
 Nicole Berlyn Katz and Marty Katz  
 Bob Berry and Kim Mai  
 Adam Black  
 Daniel and Shimrit Black  
 Adam Blumer and Sarah Guernsey  
 BostonBean Coffee Company  
 Brezniak-Rodman Funeral Directors, Inc.  
 Bright Funds  
 Judith Brodtkin



*Leslie Singer, Board Member Peggy Barry, Linda Koretz, Lauren Flitt and Robin Nable*





*Craig Slater, Jay and Andrea Segel, with Board Member Gary Dennis and his wife Cara*

Robert and Rosalind Brown  
 Rabbi Danny and Micol Burkeman  
 Fay Bussgang  
 Kirk Carter  
 Dennis Ceru and Roxanne Lyman  
 Barbara Cheris  
 Christopher Heights of Marlborough  
 James Cinamon  
 Lino and Kathryn Covarrubias  
 Gary and Kimberly Creem  
 D.S. Yarckin Electric, Inc.

Danforth Advisors  
 Data Point Capital  
 Erica Driver  
 Jeffrey and Jennifer Drucker  
 Carolyn Dykema  
 Frances Elovitz  
 Environments at Work, Roger Kaufman  
 EPAM Systems, Inc.  
 Lisa Fass and David Vivat  
 Karl and Sonya Feitelberg  
 Alan and Nanette Feldman

Steven and Deborah Feldman  
 Barry and Amy Finegold  
 First Parish in Needham  
 Paul Flaherty Plumbing & Heating Co., Inc.  
 Harvey and Marcia Fleishman  
 Howard and Lauren Flitt  
 Kevin and Paula Foley  
 Franny's Landscape  
 Ethan and Erica Freishtat  
 Paul and Li Gass  
 Kostas and Veronica Geroukos  
 Gift Card Partners  
 Penny Glassman  
 David and Sharon Goldstein  
 Barbara and Howard Gordon  
 Greater Boston Gastroenterology  
 Peter Gross  
 Lee and Martha Hammel  
 Harvard University, The Memorial Church  
 Hebrew SeniorLife  
 Ruth Hertz  
 Diane Hessian and Bob Stringer



*Board Member Jodi Bring with Deborah Weinhaus*





## DONORS & CONTRIBUTORS continued



*Director of Development Jayne Lampert with next generation donors at the Annual Backpack Event*

Linda Hill and Roger Breitbart

Stephanie and Shaun Hutch

Ronald and Linda Isaacson

Jeffrey Isen

Edward and Betsy Jacobs

Robin Jaffe and Andrew Schulwolf

Jewish War Veterans

Tripp and Robin Jones

Mark and Karen Julien

Lori Kagan and Bill Altman

Matthew and Deborah Kaplan

Kaplansky Insurance

Keane Fire & Safety Equipment  
Company, Inc.

Matt Kehoe

John Kennedy

Ken's Foods, Inc.

Susan Kestler and Carl Katzeff

Kistler & Knapp Builders, Inc.

David Klein and Robin Wolk

Tali and Noah Kolatch

Steven and Linda Koretz

Martin and Phyllis Kornguth

KPMG Boston

Sew-Leong Kwa

Marc and Jayne Lampert

Ruth Lander

Bill and Martha Lerman

Jeffrey and Meryl Levine

Steven Levine

Brett Levy

Eric Levy

Rabbi Daniel and Fran Liben

Stuart Lieblich

Dru Lindgren

Dennis Lombardo

Steven Loose

Melissa and Scott Lush

Mark and Mary-Jeanne Manning

John McArthur and Reva Tankle

Mercer

David Michelson and Yeonmi Ahn

Middlesex Savings Bank

Roberta Molliver

Morris & Lillian Gould Foundation

Scott Moskol and Ben Baker

New England Seal Coating

Next Generation Communications, LLC

Dana and Sarah Nielsen

Randy O'Brien

Ophthalmic Consultants of Boston (OCB)

Alexander Opatowsky

Samuel and Alyne Oppenheim

William O'Reilly and Liz Ross

Srivani Pandurangan

Beran Peter

Vincent Pizzi and Joy McCune

PwC

Marty and Debbie Quitt

Quock Associates

Jacqueline Ramirez

Stuart and Judy Rhein

Paul Richter and Dana Kaplan Richter

Judith Riegelhaupt

Steven Robbins and Dana Hayes

Gloria and Burton Rose

Rosen Shingle Creek

Gail Rosenberg

Scot and Denise Rosenblum

Stuart Rosenthal

Michael and Kerrie Rothschild

Ian and Maggie Rubin

Janet Sanders

Aviva Sapers and Judith Sydney

Michael and Barbara Sawyer

Steven and Robin Scari

Douglas and Andi Shaw

Gary and Caryl Shaw

Sheraton Framingham Hotel





Board Vice President Josef Volman and COO Lino Covarrubias with Joyce and Bill Cummings

Ira and Linda Shoolman  
 Steven Shoyer and Deborah Horwitz  
 Andrew and Sharon Silverman  
 Martin Singerman  
 Michael and Barbara Snyder  
 Rabbi Sharon Sobel  
 Stephen and Trudy Sonis  
 Norman and Joyce Spector  
 Karen Spilka and Joel Loitherstein  
 Jen and Eric Spindt  
 St Mary's Credit Union  
 Justin and Tammy Steinman  
 Mauro Stuparich  
 Chrisann Taras and Jerry Nocera  
 Diane and Lawrence Teitelbaum  
 Telos Advisors

Temple Beth Sholom  
 Temple Shir Tikva  
 Steven Tobias  
 Larry and Jesse Tobin  
 Total Services Corporation  
 United Way of Massachusetts Bay and  
 Merrimack Valley  
 United Way of Tri-County  
 Justin Vogel  
 Jeff Volk  
 Diana Wainrib and Alfred Hamilton  
 Waterstone Management Group, LLC  
 Norman and Sheila Weinstock  
 Irwin and Amy Weiss  
 Renee West  
 James and Laura Wilner

Wilson, Marino & Bonnevie, P.C.  
 Mark and Nancy Winiker  
 Raphael Wolf and Huong Nguyen Wolf  
 Louise Wolfe and Stefan Ahlblad  
 Bill and Sheila Wolfson  
 Howard and Candice Wolk  
 Howard and Nancy Wolk  
 Paige Yates  
 Paul and Judith Zaff  
 David Zaltas

**\$100-249**

Aalanco Service Corp.  
 Allison and Charles Abrams  
 Martin and Rachel Abramson  
 Henry Adams



# DONORS & CONTRIBUTORS continued

Merrill Adler  
Robert and Julie Ain  
Ruth Aisenberg  
James Alderman and Janette Cavallo  
Brenda Altschul  
David and Carol Amidon  
Wallace and Lois Arthur  
Jay and Erica Ball  
David Bamel  
Jacob and Julie Barth

David Bunis and Jacqueline Hallo  
Donna and William Carleton  
Gerda Chalfin  
Delia Cheng  
Christopher and Elizabeth City  
Rosemarie Coelho  
Alan and Linda Cohen  
Edward and Reesa Cohen  
Gerard and Sherry Cohen  
Janise and Martin Cohen

Malvina Drummond-Goldfarb and  
Gregory Goldfarb  
Joann Eccher and Derrill Bazzy  
David and Toby Ellis  
Rosalie Epstein  
Roberta Falke and Andrew Levey  
Gerald and Judith Feldman  
Neal and Adrienne Fishman  
Fitts Insurance  
Jim Flowers  
Mimi Freed  
Cathy Freedberg  
Arnold Freedman  
Gustav Freedman and Jacquelyn Sand  
Michael and Rebecca Friedman  
Diane and Michael Gardener  
Shari and Richard Gelber  
Larry and Holly Glick  
Richard and Laurie Gliklich  
Franklin and Bonnie Gold  
Laurie Gold  
Rabbi Neal and Heidi Gold  
Janet Goldenberg  
Alan and Linda Goldstein  
Jonathan and Jamie Gossels  
Sanford and Lorraine Gotlib  
Barbara Green  
Ben Greenberg  
Mindee Greenberg  
Gail and Mike Gregory  
Michael Griffin and George Nugent  
Esther Gross  
Jake and Liz Grossman  
Steven and Barbara Grossman  
Stephen Gunzburger  
Drina Guzman  
Harvey Halsband  
Hello! Destination Management  
Martin and Ellen Herbordt  
Lois Herman  
Thomas and Nancy High  
Joseph and Sandra Hurwitz



*Weston High School juniors Olivia Swartz, Becca Abrams and Lily Nielsen led runners in raising money to support the Annual Backpack Event*

Bartley Financial Advisors  
Marybeth Beauchesne  
Eric and Brett Berkman  
Craig and Staci Berkson  
Norman and Ronda Bloomstein  
Alla Bolkhovsky  
Susan Borzelleca  
The Boston Experience,  
Adam Marx and Mitch Solomon  
James and Susan Brady  
Irwin Brendler  
Gerry and Helen Brody  
Ariel Bublick  
Selwyn and Michelle Buchman

Judith Cohen  
Rosalyn Cohen  
Benjamin and Jacqueline Cohn  
Bruce and Roslyn Comenitz  
Congregation Or Atid  
Christina Crowe  
Daniel Dain  
Marcie and Vincent D'Aleo  
Bryan and Debbie Dank  
Gary and Karen Dauer  
Gary and Rhonda Davidson  
Christy Deroche  
Matt Douglas  
Catherine Dowling





## DONORS & CONTRIBUTORS continued

IBM Employee Services Center  
Rick and Gitte Irving  
Allyson Jaffe  
JCC Greater Boston  
Jewish Workshop for Education & Culture  
Jeff and Cantor Marcie Jonas  
Robert and Susan Joseph  
Rabbi Randy Kafka  
Boris and Tatyana Kagan  
Fred and Greta Kahn  
Joel and Jane Kamer  
David Kanefsky  
Burton and Renee Karlin  
Neil and Phyllis Kaufman  
Meg and Bruce Keltie  
Irving and Mindy Kempner  
Mark Klempner and Elinor Svenson  
Sergio Kogan  
Elaine Konczal  
Barrie and Steven Kraus  
Julie Kravets  
David and Carol Krentzman  
Barbara Kutner  
Mark and Joan Lappin  
Diana Levinson  
Meyer and Caraline Levy  
Rose Lewis  
Barbara and William Lucas  
William Lush  
Daniel and Ellen Mainzer  
Alan Mandl  
Edward Mann  
Scott Marmer  
Eric and Janice Masi  
Geraldine McEachern  
Samuel Mendales and Judy Rakowsky  
Gregg and Jennifer Menell  
Abby Miller  
Joan and Harvey Milowe  
Paula Mitchell  
Jeffrey Mittleman

Danielle Murphy  
N.E.C. Trophies  
Barry Needalman  
Nobscot Supply Company  
Victor Nussbaum and Karen Margolis  
Marvin and Cyd Ostrovsky  
Rose Pappenheimer and Mark Horenstein  
Alan Paster and Lois Bienstock  
Bruce and Joyce Pastor  
Wendy and James Paul  
Edna Perlmutter  
Laura Pinto  
David Podell  
Edward and Janet Polansky  
Fred and Carole Pritzker  
Elaine Radis, Tim and Lois MacDonald  
Mark and Joanne Raider  
The Rashi School  
Gila Reinstein  
Pamela Robertson  
Joel and Bonnie Rosenthal  
Sandra Rothschild  
Royal Cleaners and Tailors  
Cynthia Rubin  
Michael and Jodi Rubin  
Joseph Rubinovitz  
Anne Ryan  
Salesforce.org  
Betsy Selfo  
Alex and Autumn Sendzik  
Steven Sepe  
James and Rosalie Shane  
Susan Shapiro  
Geraldine Marie Shea  
Sanford Sherizen  
Mark and Irina Shklovsky  
Joan and Leonard Shulman  
Martin and Carol Shulman  
Daniel and Diane Shusman  
Susan Sidel  
Carol and Peter Silbermann

Craig and Leslie Slater  
Maggie Sloan  
Elizabeth and Jason Sobol  
Stephen Solomon  
William Sopp  
Judith and Herbert Spivak  
Tara Stoinski  
Mark Strehlke  
Jonathan Sudkin  
Sarah Svenson  
Harvey and Rona Tananbaum  
Rachel Tunick and Peter Staab  
Elina Uriaev and Ben Zislin  
Dorothy Vine  
Yevgeniy Voskov  
Garry and Bette Ann Weiner  
Robert and Joan Weiner  
David and Deborah Weinhaus  
Edward and Arline Westerman  
Ruth and Joel Winett  
Richard and Linda Wolk  
Richard Wood  
Dina Wosk  
Joseph Zipkin

### Under \$100

Karen and Natan Abraham  
David and Risa Abrams  
Maxine Albert and Robert Wallace  
Rabbi Katy Allen and Gabriele Mezger  
Alexander and Carrie Ann Alpert  
Amy Alpert  
Amazon Smile  
Arnold and Barbara Andler  
Seymour and Irma Andrus  
Lisa Apostol  
David Aronson  
Leanid Astrakou  
Fanya and Nokhum Averbukh  
Eileen Avers  
Robert and Sharon Ayres





*Michelle and Steven Garfinkel with Board Member Jeffrey Swartz and his wife Heather*

Marcia Bachman	Estelle Cohen	Robert Evans
Irving and Charlotte Backman	Jodi Cohen	Sema and Michael Faigen
Rabbi Jordana Schuster Battis	Lawrence and Meryl Cohen	Doris Feinstein
Inge Baye	Morton and Marlene Cohen	Peter Fellman and Cynthia Greene
Rabbi Laurence and Leslie Bazer	Richard Cohen	Rebecca and Joel Ferat
Phil Benjamin and Melinda Milberg	Steven Cohen	Norman and Rosalind Finkelstein
Sheri Beran	Susan Cohen	Arthur and Lois Finstein
Marci Blacker	Marilyn and Paul Conlin	Nancy and Christine Fliesler
Irma Bloom	Steve and Bryna Curley	Stephen and Rosalie Fox
Laura and Steve Blumberg	Joe and Katherine Daisley	Neil and Carole Frieband
Irwin Blumer and Lynne Beattie	Herbert and Ann Daitch	Kim Frisch
Gary and Colleen Breitbord	Ralph and Melissa Dangelmaier	Steven and Phyllis Garr
Heather Brock	Lawrence and Meryl Dannenberg	Katharine Gasser
Thelma Brody	Barry and Elizabeth David	Andrea Geller
Arlon Brown	David and Carole Decter	Martin and Amanda Glynn
David and Mimi Brown	Stephen and Linda Desatnick	Arthur and Marilyn Goldberg
Michael Carney	Richard Diamond and Pamela Gilman	Norman and Sheila Goldberg
Susan Castillo	Robert and Annabel Dodd	Paul and Julie Goldberg
Candace Cavalier	Albert Donsky	Michelle Goldstein
Harvey Chafitz	Simmi and Joseph Doyle	Gali Gordon
Kenneth and Cheryl Chernack	Susan Driscoll	Joyce Gordon
John and Susan Clayman	Lewis and Mindy Elias	David Gotch
Michelle and Drew Clemens	Stephen and Sharon Engler	Priscilla Gould



## DONORS & CONTRIBUTORS continued

Resa Gray, Andrew Parrella and Alex Gray	David and Carol Kagan	Lois Levick
Danna Greenberg and Michael Tobin	Nathan and Sally Kaitz	Martin and Carol Levin
Fred and Barbara Greenberg	Eli Kalaora	Leslie Levine
Scott and Janice Greenberg	Susan Kanoff	Susan and Daniel Levy
Alan and Sondra Greenwald	Robert and Helen Kaplan	Risa Lifshatz
Wendy Gutterson and David Crandell	Rene and Edward Katersky	Muriel Litchfield
Kara Guy	Alan Katz	Carol Logan
Jack and Harriet Hammer	Andrew Katz	Robert and Esther Lynn
Paul Hanft	Leonard Katz	David Margolis and Missy Daboul-Margolis
Russell and Marilyn Harter	Leonid and Alla Kazyulin	Rabbi Todd and Michele Markley
Sophie Hearne	Samuel Kendall and Catherine Zusy	Philip Mason and Jacqueline Horwitz
Gail and Michael Herzig	Herbert and Sally Kepnes	Stephen Matthews and
Joan Hoffman	Herb Kimiatek	Sheelagh O'Connor
Richard and Jodi Holman	Irene Kingsbury	Ann McCarthy
Marc and Diane Homer	Derek Klamerus	Saul Mendoza
Harold and Paula Homonoff	Barbara Klein	MetroWest Jewish Day School
Robert and Caroline Horgan	Gary and Lauri Kline	Phyllis Metzger
Gail Horowitz	Frederick and Sherrill Kobrick	Michael and Alexandra Mirman
Robert Housman	Ralph and Marlene Korenstein	Ilan Mizrahi and Deborah Glass
Mable Jackson	Alice Korwan	Kristin Mockus
Michael and Nicole Jakob	Joel and Dana Kramer	Valerie Montuori
Dorothy Janda	Stephen and Pearl Kraus	Harvey and Lorraine Moskowitz
Parviz and Fay Janfaza	Ken and Karen Krowne	David and Ellen Murachver
Janis Johns	Nicholas and Merle Kushner	Martin and Edna Nichols
David and Claire Joyce	Judith Lane	Linda and Henry Okun
Julie's Z Breads	Susan Lees	Leonard Paris
JustGiving	Karen Lefkowitz	PayPal Giving Fund
Nancy Kaftan	Michael and Roberta Leis	Stephanie Pearlstein



*Former Board Treasurer Daniel Finn and his wife Dana, former Board Members Jim Floyd and Renée Finn with Jim's wife Donnamarie*





## DONORS & CONTRIBUTORS continued

Susan Phillips  
 Fred and Joanne Pike  
 Joyce Pimental  
 Harriet Pinto  
 Darren Porras  
 Debbie and Michael Porter  
 Eric Pratum  
 Jill Pressman  
 Phyllis Prout  
 Bruce and Susan Rakusin  
 Roberta Reingold  
 Andrea Richman and Michael Shulman  
 Muriel Stern Riseman  
 Jose Rivera  
 Stephanie Robertson  
 Stephanie and Deborah Rohr  
 Sydell Rosen  
 Bonnie Rosenberg  
 Harry Rosenberg  
 Alice Rotfort  
 Barry and Melva Rowe  
 Marcia Rowe  
 Pauline Rozowsky  
 Anne Rubenstein  
 Stephen and Irene Rubin  
 William and Evelyn Rubin  
 Robert and Nancy Rudko  
 Ruthann Ruthfield  
 Sara Salomon  
 Lori Saslav  
 Judith Schaechter and  
 Michael Brownstein  
 Howard and Linda Schiffman  
 Theresa Schofield  
 Andrei and Liliane Schor  
 Marc and Debra Schultz  
 Jeff and Kim Schwartz  
 Phil and Susan Schwarz  
 Rachel and Mark Seliber  
 Bruce Shackleton and Elizabeth Fineberg  
 Inna and Victor Shanson

Bonnie and Teodore Shapiro  
 Eugene and Elaine Shapiro  
 Gail Shapiro and Gilbert Wolin  
 Barbara Share  
 Derrek and Beth Shulman  
 Joel and Elaine Shwimer  
 Susan Siegel  
 George and Ilene Silver  
 Leonard and Gail-Ann Simon  
 Jordan Singer  
 Adam Sisitsky and Jennifer Stark  
 Paula Slotkin  
 Helaine and William Sneierson  
 Linda Sohmer  
 Harold and Milly Solomon

Riley Tobins  
 Joshua and Connolly Tolkoff  
 Laura Tramontozzi and James Coelho  
 Amelio and Rachel Vazquez Reina  
 Alfredo Vigil  
 WAITT  
 Harvey and Joyce Wallenstein  
 Claire and William Wan  
 Mervyn and Rosemary Weich  
 Bernard Weichsel  
 Bob Weiman  
 Stephen Weiner  
 Aviva Weinstein  
 Geri Weinstein  
 Sherry Weinstein



*Wendy Nelson, Jay Freedman and Stephanie Elkind  
 with Board Member Deborah Gotbetter*

Joanne Sostilio  
 Richard and Janice Spector  
 James Statman and Amy Ansell  
 Maureen Devitt Stone and Alan Stone  
 Richard Stone and Jane Brown  
 Stephen and Jane Sugarman  
 Edna Supnik  
 Brooke Surdel  
 Jodi Swartz  
 Cristen and Robert Tabors  
 Roberta Taylor  
 Temple Israel of Natick

Leslie Wheeler and Robert Stein  
 Barry and Sheila Wieder  
 Warren and Nancy Winnick  
 Myrna Winter  
 Craig and Nancy Wolpert  
 Jeremy Yamin  
 Lee-Ann Yolin  
 Arnold and Debra Young  
 Adriana Zavala and Andrew Penziner  
 Beverly Zibrak

In addition to the donors listed herein, we are grateful to the many donors who wish to remain anonymous. Gifts as of 9/30/2019.



Introducing New Board Directors:



Ashley DePaolo



Dena Kowaloff



Meyer Levy



David Podell

OFFICERS

President	David Milowe, Canton	Vice President	Michelle Wilen, Ashland
Vice President	Allison Kates, Wayland	Secretary	Ian Rubin, Wayland
Vice President	Sari Anne Rapkin, Needham	Treasurer	John Herrera, Westport CT
Vice President	Josef Volman, Newton		

DIRECTORS

Peggy Barry, Dartmouth	Kevin Foley, Framingham	Meyer Levy, Framingham
Chester Black, Wayland	Ari Freisinger, San Francisco CA	Deborah Merkin, Wellesley
Jodi Bring, Natick	Jay Gainsboro, Framingham	David Podell, Natick
Chase Carpenter, Cambridge	Jonathan Gerber, Holliston	Barbara Schultz, Sharon
Fernando Castro, Ashland	Penny Glassman, Ashland	Jeffrey Swartz, Weston
F. Javier Cevallos, Framingham	Deborah Gotbetter, Weston	Karen Tichnor, Wayland
Allan Chasen, Wayland	Richard Henken, Sudbury	Larry Tobin, Needham
Gary Dennis, Wayland	Dena Kowaloff, Framingham	Robin Welch, Framingham
Ashley DePaolo, Ashland	Ezra Levine, Sudbury	

ACTIVE PAST PRESIDENTS

Aron Ain, West Newton	Kathryn Covarrubias, Framingham	Judi Raphael, Hopkinton
Robert Band, Framingham	James Gordon, Framingham	Marcia Rosenberg, Wayland
Alan Bernstein, Waltham	Louis Kates, Framingham	Lester Schindel, Framingham
Judith Bernstein, Waltham	Roberta Molliver, Framingham	Reva Tankle, Bellingham
Carol Chudnofsky, Sudbury		

MANY THANKS TO...

It is with abundant gratitude that we thank outgoing Directors **Robert Fields**, **Ethan Freishtat**, **Sharon Goldstein** and **Janet Sanders** for their generous service and for helping JFS accelerate social, academic and health equity in our community.





*Jewish Family Assistance team members: Diana O'Brien, Maryann Cardani, Stephanie Rohr, Shoshana Savitz, Myrna Winter and Abrielle Salloway, recipient of the Lebold Award*

EXECUTIVE TEAM

Marc Jacobs .....	Chief Executive Officer
Lino Covarrubias .....	Chief Operations Officer
Rosemarie Coelho .....	Chief Learning, Performance and Strategy Officer
Amanda Coughlin .....	Senior Director, Operations and Revenue Programs
Lucia Panichella .....	Senior Director, Programs and Partnerships

DIRECTORS

Wendy Kogan .....	Operations Systems and Technology
Jayne Lampert .....	Development
Diana O'Brien .....	Family Assistance
Elizabeth Ramirez-Grzela .....	Finance
Malka Young .....	Allies in Aging JFS Elder Care Solutions

MANAGERS

Kayla Hopkins .....	Program and Volunteer Operations
Risa Lifshatz .....	Business Office and Administration
Dámaris Medina-Hernández .....	Homecare
Stephanie Rohr .....	Inclusion Initiatives and Program Specialist, Jewish Family Assistance Network
Daniel Woodward .....	Immigrant Services



*Children and Families team members: Itayara Marinho, Amanda Boralessa, Kayla Hopkins, Renee Saleh, Margaret Kenney, Daniel Woodward, Marissa Zwelling, Malvina Drummond-Goldfarb and Raquel Woodard*







*Allies in Aging team members: Shashona Kaye, Karen Reitz, Malka Young, Judy Herzig-Marx and Michelle Bodin-Hettinger*

## CHILDREN AND FAMILIES

**Includes:** Adoption Choices, Citizenship Assistance and Resettlement, Pathways to College, Reducing Achievement Gaps and other community programs

Heather Flugrad  
Nermin Helaly  
Margaret Kenney  
Lisa McLaughlin

Anne McManus  
Anna Michelson  
Yuriy Roudenko

Jenny Swett  
Raquel Woodard  
Marissa Zwelling

## FAMILY ASSISTANCE

**Includes:** Children's Clothing Closet, Family Assistance Network, Healthy Harvest and Weekend Nutrition, Information and Referral Network, Lucy and Joe's Food Pantry and Ready for Success Employment Support

Maryann Cardani  
Malvina Drummond-Goldfarb

Abrielle Salloway  
Shoshana Savitz

Myrna Winter

## ELDER AND FAMILY CAREGIVING SERVICES

**Includes:** Allies in Aging JFS Elder Care Solutions, Healthy Aging, Healthy Partners, Homecare, Keshet and Keshet Y.O.U., Patient Navigator, Warm Connectors and other community programs

Merrill Adler  
Annette Alderman  
Karen Block  
Michelle Bodin-Hettinger  
Ruth Grieco  
Esther Heimberg

Judy Herzig-Marx  
Wen-Ying Ju  
Shashona Kaye  
Joni Lebov  
Jessica Lim  
May Liu

Hsiang Ru Lu  
Mala Maurer  
Lesley Orlinsky  
Karen Reitz  
Laila Vehvilainen  
Sean Woo





*Homecare team members: Dámaris Medina-Hernández, Felicita Mejía, Nydia Rosario, Joselina Suriel, Lucinda Tejeda, Manuel Sayán, Elidia Morales Barrera, Carmen Santana-Pimentel, Josiah Ihechukwu and Elvia Morales*

## HEMOCARE

Feliciano Carmona  
Olga Cordero  
Margarita de Jesus  
Michel Domínguez-Tatis  
Josiah Ihechukwu  
Monica León  
Benita Martinez  
Maxima Martínez  
Felicita Mejía  
Keila Mieses

Elvia Morales  
Elidia Morales Barrera  
Maria Morales-Ortiz  
Ana Morillo Rosario  
Frederick Owusu  
Dolores Paredes  
Pura Pimentel  
Josefina Ramírez  
Patricia Ribeiro  
Jenny Rodriguez de Diaz

Nydia Rosario  
Mirqueya Rosario Rivera  
Miriam Samayoa  
Carmen Santana-Pimentel  
Manuel Sayán  
Scarlyn Suárez  
Joselina Suriel  
Lucinda Tejeda  
Maria Isabel Vasquez Guillen

## BUSINESS OFFICE/ADMINISTRATION

Natella Dayn  
Jaquan Harris

Joanne Kane  
Barbara Mines

Maya Pestov  
Justo Rosario-Lebrón

## AMERICORPS MEMBERS AND STUDENT INTERNS

Amanda Boralessa  
Itayara Marinho

Patricia Murphy  
Renee Saleh

Sean Weilbrenner

## BEST OF LUCK TO...

It is with sincere appreciation for their hard work and dedication that we say goodbye to **Kayla Hopkins** and **Jaquan Harris** as they embark on new adventures.



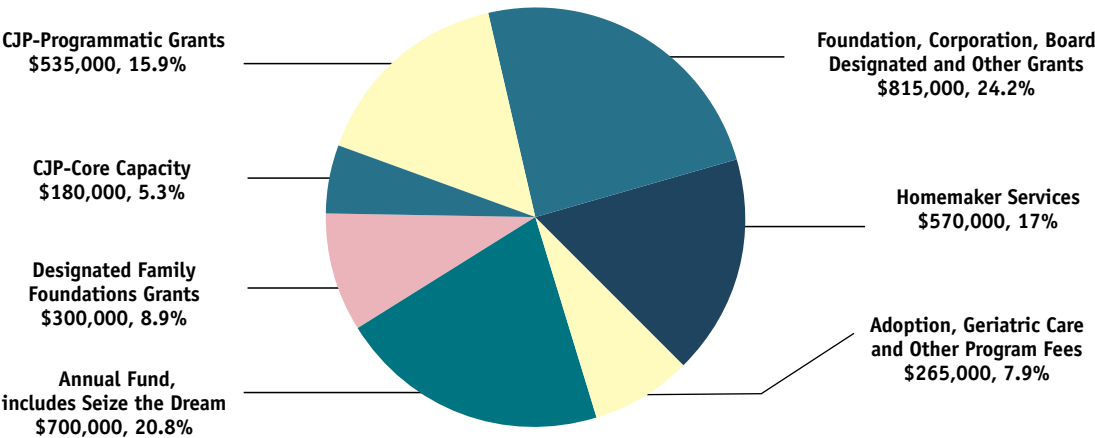
*Business Office/Administration team members: Elizabeth Ramirez-Grzela, Wendy Kogan, Natella Dayn, Maya Pestov, Risa Lifshatz, Justo Rosario-Lebrón, Barbara Mines and Joanne Kane, recipient of the Roll Up the Sleeves Award*



# Jewish Family Service of Metrowest

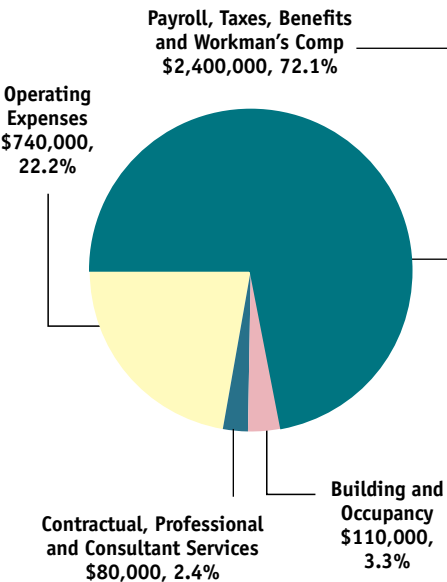
FY 2019

Cash Receipts—\$3,365,000



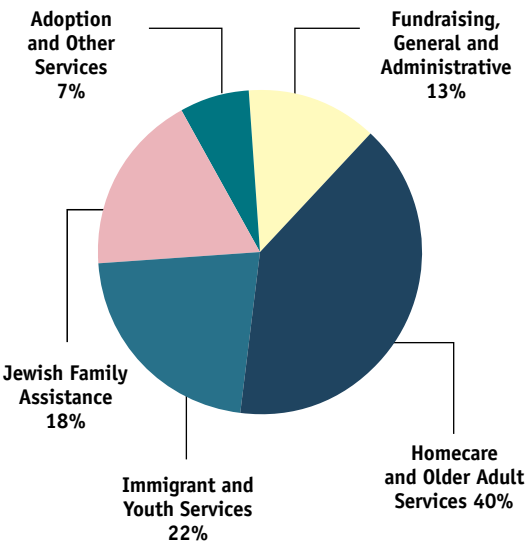
FY 2019

Cash Disbursements—\$3,330,000



FY 2019

Expenditure Allocations—\$3,330,000







*Jewish Family Service of Metrowest provides vital social, health and community services to alleviate suffering, enhance lives and support people in need.*



Guided by the Jewish traditions of social responsibility and compassion, we are dedicated to supporting people of all ages and backgrounds, treating them with respect and dignity, helping them maintain and sustain healthy lives and independence, providing culturally relevant services and working with community partners to broaden our impacts.



## JEWISH FAMILY SERVICE OF METROWEST

**PHONE:** 508-875-3100  **FAX:** 508-875-4373  **EMAIL:** [info@jfsmw.org](mailto:info@jfsmw.org)

475 Franklin Street, Suite 101, Framingham, MA 01702 **[www.jfsmw.org](http://www.jfsmw.org)**



SUPPORTED BY



Stay connected



Report to the Community courtesy of CommCreative  
[www.commcreative.com](http://www.commcreative.com)

COMMCREATIVE